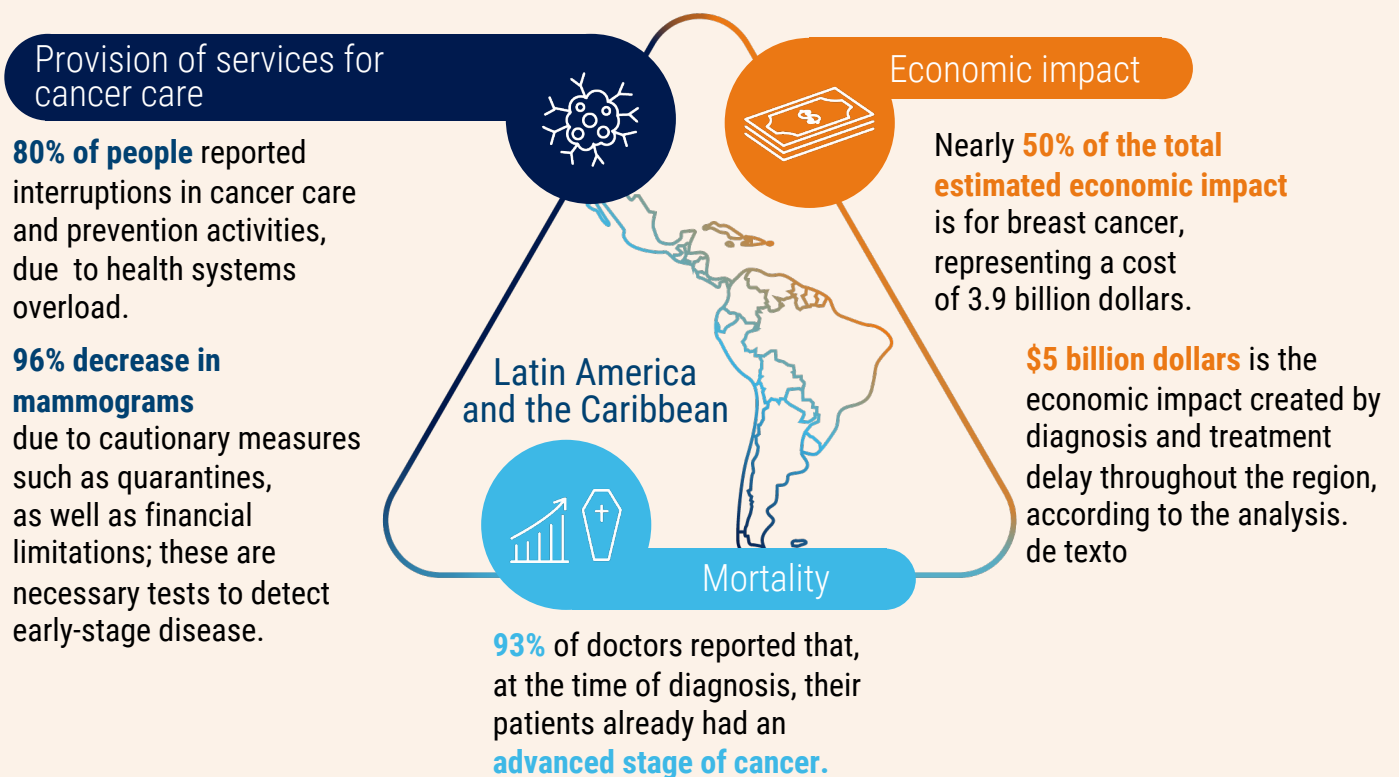


THE IMPACT OF COVID-19 PANDEMIC ON CANCER CARE IN LATIN AMERICA AND THE CARIBBEAN

A study led by the Americas Health Foundation and supported by Roche, assessed the impact of the pandemic on 18 key variables linked to cancer care in 11 countries across the region: Brazil, Colombia, Ecuador, Mexico, Peru, Central America (Costa Rica, the Dominican Republic and Panama), and Southern Cone (Argentina, Chile and Uruguay).

Cancer is the second leading cause of death in Latin America, accounting for more than 700 thousand deaths in 2020.

Key findings:



How to improve these results?

The report sheds light on some measures that can be implemented to strengthen health systems and improve their response capacity:



Governments must recognize the burden generated by the pandemic in cancer care to implement comprehensive strategies to mitigate this impact.

Prioritize early diagnosis and timely and continued access to treatment.

Governments must recognize the burden generated by the pandemic in cancer care to implement comprehensive strategies to mitigate this impact.

Governments, patient groups and medical organizations must implement programs to prepare patients to face the new reality.

To access the full report, click on the following link.

[Study](#)

The report was produced by medical experts and the Americas Health Foundation, EY-Parthenon and the Catalyst Consulting Group and supported by Roche, a leader in personalized healthcare and the world's largest biotech company.